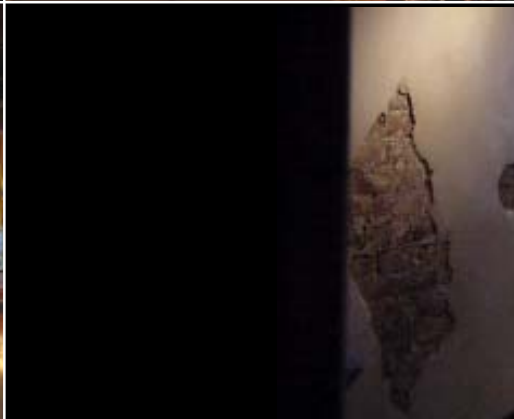


A two floor red brick-and-timber-framed warehouse represents a unique window into Vancouver's past.

This industrial building, located beneath the Granville Street bridge's northern approach ramp incorporates dozens of items salvaged from other demolition sites.



VANCOUVER'S PREMIERE FILM LOCATION

L'ESPACE

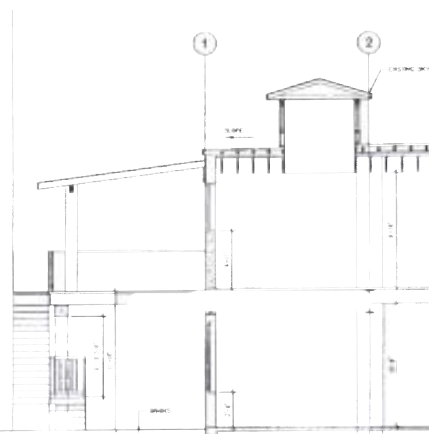
UNDER THE BRIDGE



L'ESPACE

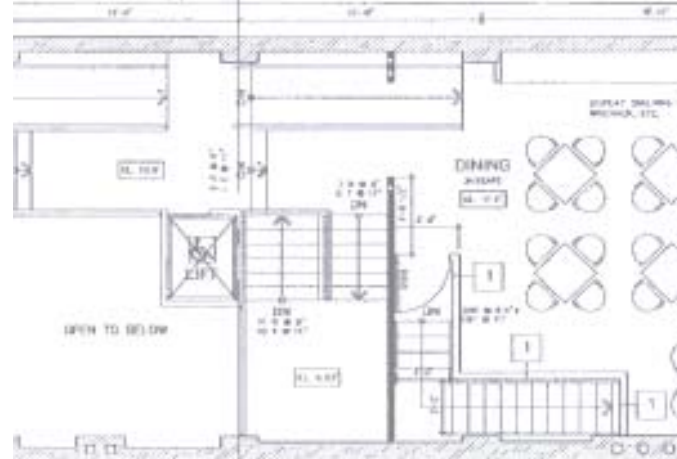
1435 Granville
Vancouver BC V6Z 1N1
info@rendez-vousvancouver.com
604-803-9599

1435 Granville Street
Vancouver, British Columbia
604-803-9599



L'Espace is a 4,000 square foot historical industrial building that is one of Vancouver's finest movie locations.

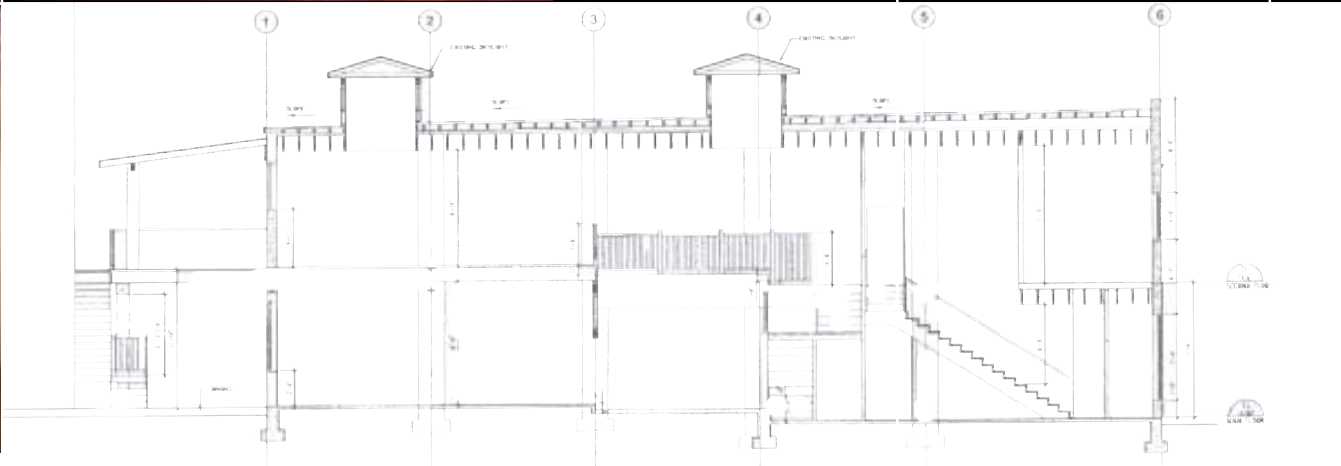
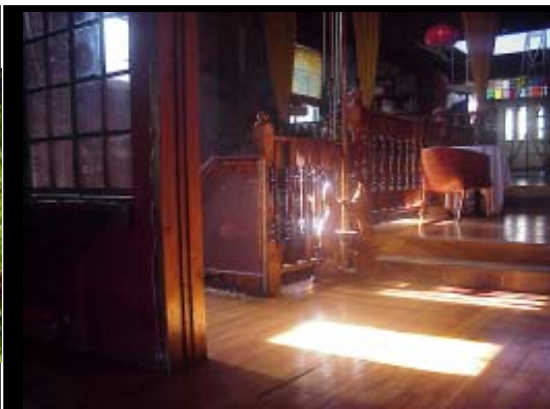
The two storey red brick and timber-framed warehouse represents a unique window into Vancouver's heritage, both past and present. Wrought-iron church stairway, glass chandeliers, oak framed mirrors, heritage doors and skylights are just some of L'Espace's unique features.



With it's character loft (New York or Montreal), open stairwell, enormous terracotta-tiled kitchen or lush garden patio, l'Espace is a filmmaker and location manager's dream.

Call Regis Painchaud today for your exclusive viewing appointment: 604-803-9599.



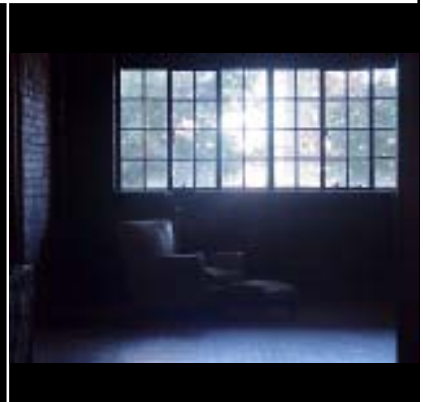


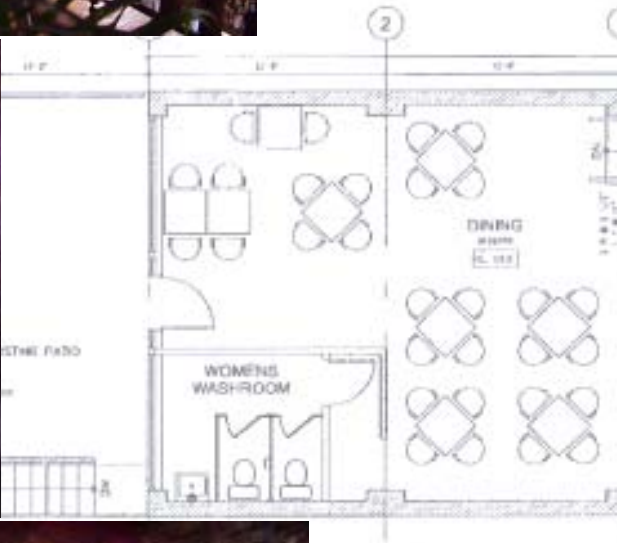
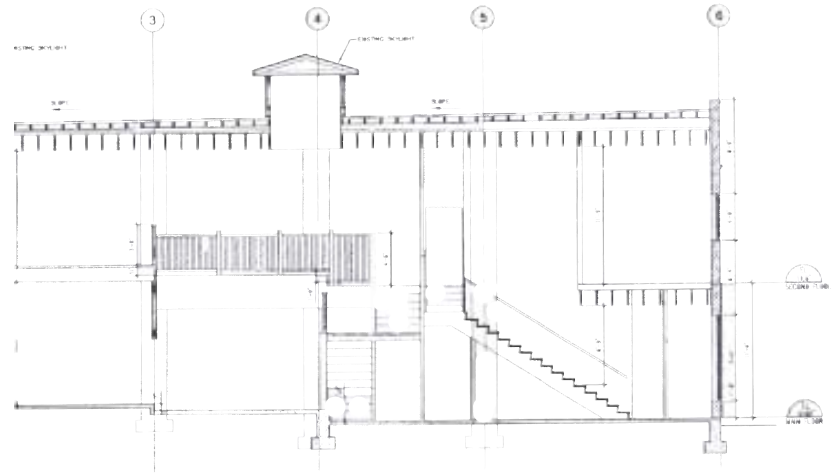
NO.	DATE	REVISION	BY	APP'D

PROJECT: 1410 GRANVILLE STREET, VANCOUVER, B.C.

ARCHITECT: DOUGLAS L. MASSIE ARCHITECT
1804 244-1496
1000 WEST END AVENUE, VANCOUVER, B.C. V6E 2E6

ENGINEER: CHESTERMAN ENGINEERING & LTD.
1000 WEST END AVENUE, VANCOUVER, B.C. V6E 2E6





OPTION ONE (SECTION)

SUBJECT	DATE	DESIGNER	SCALE	TITLE
		DOUGLAS L. MASSIE ARCHITECT (604) 264-1456		BUILDING SECTION
		1415 GRANVILLE STREET, VANCOUVER, B.C.		
		DR. DEBORAH HARRINGTON LTD. ARCHITECTURAL PHOTOGRAPHY		

There is no other art-oriented space like it in Vancouver; it's one-of-a-kind.

